

Register your device

Register your device to your **MyCAEN+** account and get access to our customer services, such as notification for new firmware or software upgrade, tracking service procedures or open a ticket for assistance. **MyCAEN+** accounts have a dedicated support service for their registered products. A set of basic information can be shared with the operator, speeding up the troubleshooting process and improving the efficiency of the support interactions.

MyCAEN+ dashboard is designed to offer you a direct access to all our after sales services. Registration is totally free, to create an account go to <https://www.caen.it/become-mycaenplus-user> and fill the registration form with your data.



<https://www.caen.it/become-mycaenplus-user/>

CAEN S.p.A.
Via Vetràia, 11 55049 Viareggio (LU) - ITALY
Tel. +39.0584.388.398 Fax +39.0584.388.959
info@caen.it
www.caen.it
© CAEN SpA – 2020

Disclaimer

No part of this manual may be reproduced in any form or by any means, electronic, mechanical, recording, or otherwise, without the prior written permission of CAEN SpA.

The information contained herein has been carefully checked and is believed to be accurate; however, no responsibility is assumed for inaccuracies. CAEN SpA reserves the right to modify its products specifications without giving any notice; for up to date information please visit www.caen.it.

MADE IN ITALY: We remark that all our boards have been designed and assembled in Italy. In a challenging environment where a competitive edge is often obtained at the cost of lower wages and declining working conditions, we proudly acknowledge that all those who participated in the production and distribution process of our devices were reasonably paid and worked in a safe environment (this is true for the boards marked "MADE IN ITALY", while we cannot guarantee for third-party manufactures).



TABLE OF CONTENTS

1	Overview	4
2	Technical Specifications	6
2.1	Transceiver Component	7
2.1.1	Troubleshooting	7
3	Configuration and Installation	8
3.1	System Requirements	8
3.2	Installation	9
3.3	Uninstallation	12
3.4	Components Location	13
3.5	CONET2 Layout	14
3.5.1	Network Connection	14
3.6	Firmware Upgrade	15
3.7	CAEN Modules Control	17
3.8	CONET1-to-CONET2 Upgrade	17
3.9	CAEN Technical Support	17

LIST OF FIGURES

Fig. 1.1:	A3818C PCI Express Optical Link Controller	4
Fig. 1.2:	Mod. A3818C – 4-link version of the PCIe Optical Link Controller	5
Fig. 2.1:	A3818 Dimensional References	6
Fig. 2.2:	The pluggable transceiver component of A3818	7
Fig. 2.3:	Steps of the Optical Link transceiver plug-in procedure	7
Fig. 3.1:	Led and connector location	13
Fig. 3.2:	Network scheme	14
Fig. 3.3:	CAENUpgrader tool	15
Fig. 3.4:	S1, S2 switches location	16

LIST OF TABLES

Table 1.1:	Available items	4
Table 2.1:	A3818 Technical Specifications Table	6
Table 3.1:	CONET2 cables specifications	14

1 Overview



Fig. 1.1: A3818C PCI Express Optical Link Controller

The Mod. A3818 is a PCI Express x8 card that can plug into both x8 and x16 PCI Express slots (V1.1 or V2.0) and allows to control up to 4 CONET2 independent networks.

CONET2 is an optical link based network (the communication path uses optical fiber cables as physical transmission line), with daisy chain capabilities (up to 8 nodes controlled by one link), and proprietary communication protocol.

Through the CONET2 it is possible to handle the VMEbus through the CAEN VMEbus Optical Link Bridges (such as the V2718) or to control directly CAEN modules with built-in optical link (such as the N67xx, DT57xx and V17xx digitizers).

IMPORTANT NOTE: CONET2 is not compatible with previous CONET1 network, as detailed in the reference Application Note *AN2472 - CONET1 to CONET2 migration* free downloadable at:

<https://www.caen.it/support-services/documentation-area/>

The table below shows the A3818 orderable options.

Table 1.1: Available items

Code	Product	Description
WA3818AXAAAA	A3818A	PCle 1 Optical Link
WA3818BXAAAA	A3818B	PCle 2 Optical Link
WA3818CXAAAA	A3818C	PCle 4 Optical Link

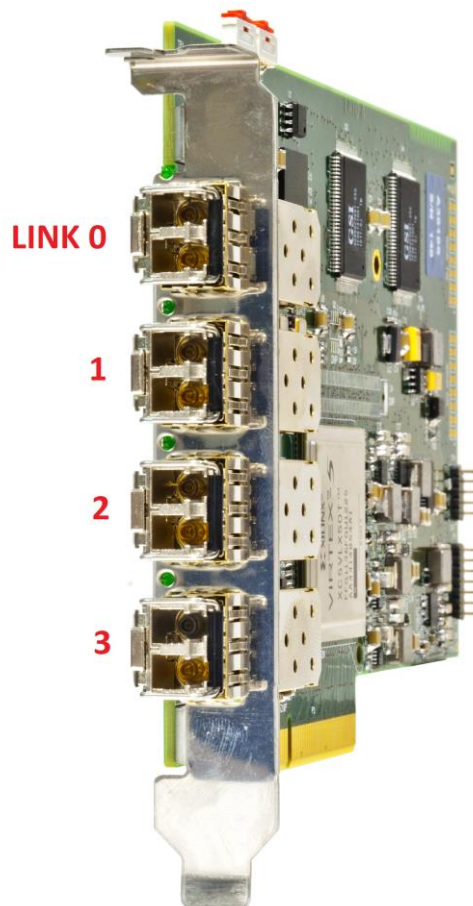
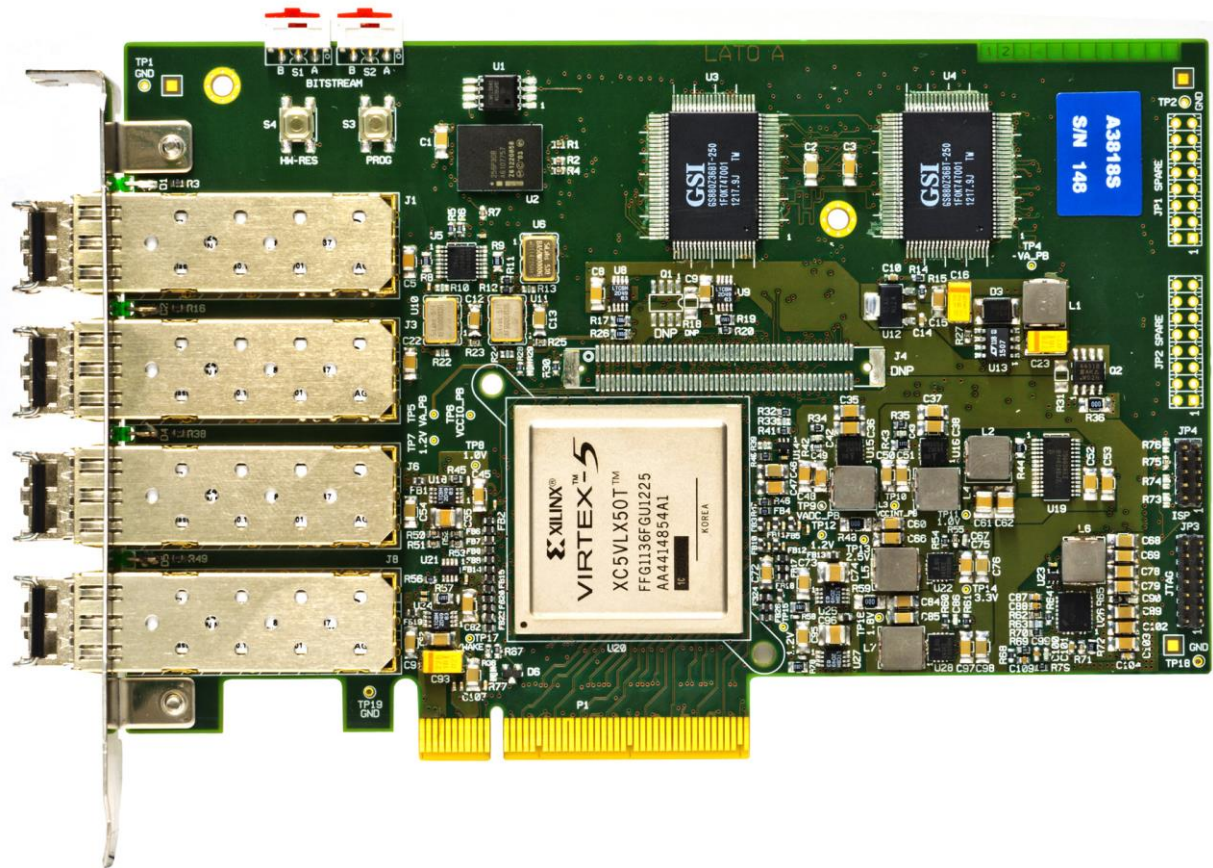


Fig. 1.2: Mod. A3818C – 4-link version of the PCIe Optical Link Controller

2 Technical Specifications

Table 2.1: A3818 Technical Specifications Table

ARCHITECTURE	PCI Express x8	
SLOT COMPATIBILITY	PCI Express x8, x16 (V1.1 or V2.0)	
PCI EXPRESS LANES	Lane Capability x8	Compatibility x1, x4 lanes slots
COMMUNICATION INTERFACE	Optical Link (CONET 2 CAEN proprietary protocol)	
NUM. OF OPTICAL LINKS	1 (mod. A3818A) 2 (mod. A3818B) 4 (mod. A3818C)	
NUM. OF BOARDS / LINK	Up to 8 boards can be controlled by a single CONET 2 link thanks to Daisy-chain capability	
TRANSFER RATE	Up to 80 MB/s	
MECHANICAL	Form Factor Half size	Dimension 106,65 x 167,65 mm (HxL) See Fig. 2.1
POWER RAILS	+12 V +3.3 V	
OPERATING SYSTEMS SUPPORTED	Linux® Windows® (warning: unsigned driver)	

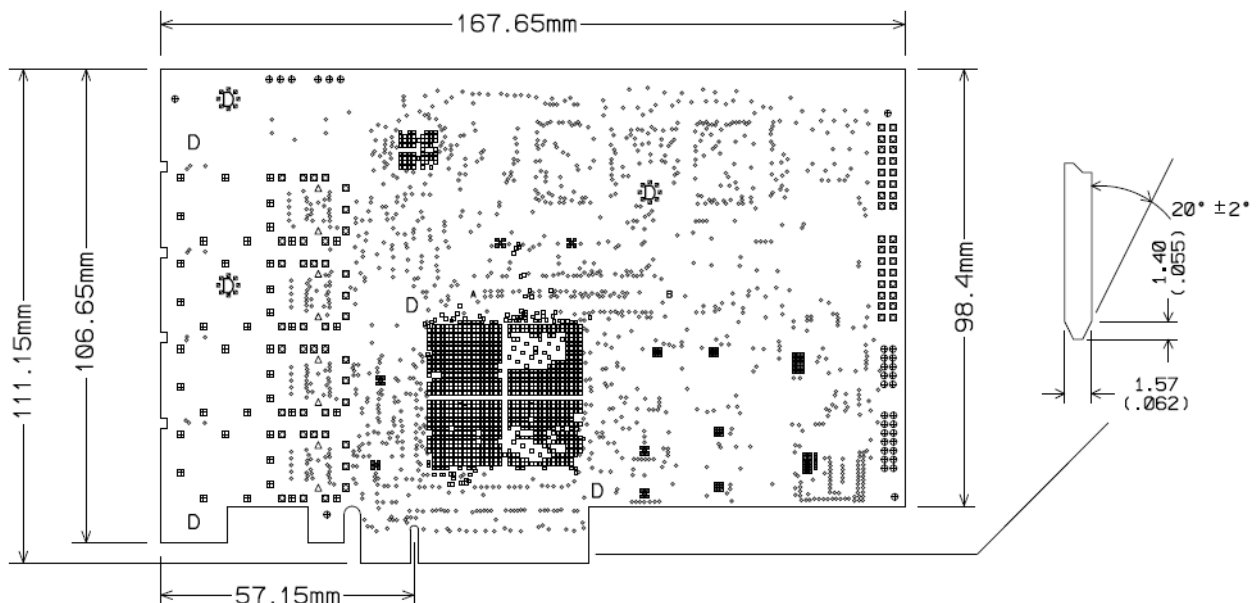


Fig. 2.1: A3818 Dimensional References

From Q3 2013, the PCB version in **Fig. 2.1** definitely substituted the old version (featuring 196,69 mm length). Both the PCB versions are declared to be full functionally interchangeable.

2.1 Transceiver Component



Fig. 2.2: The pluggable transceiver component of A3818

All A3818 types mount the Small Form Factor Pluggable (SFP) transceiver component shown in **Fig. 2.2**. The PCIe Controller is delivered with its transceiver components already plugged in and mechanically tested.

IT IS STRONGLY RECOMMENDED NOT TO UNPLUG THE TRANSCEIVER COMPONENTS!

2.1.1 Troubleshooting

In case the transceiver results partially or totally unplugged for whatever reason, the procedure to plug it back in, restoring the full functionality of the optical communication, is to push the component along its guide, fixed on the board, until a click occurs to guarantee the proper plug (see **Fig. 2.3**).

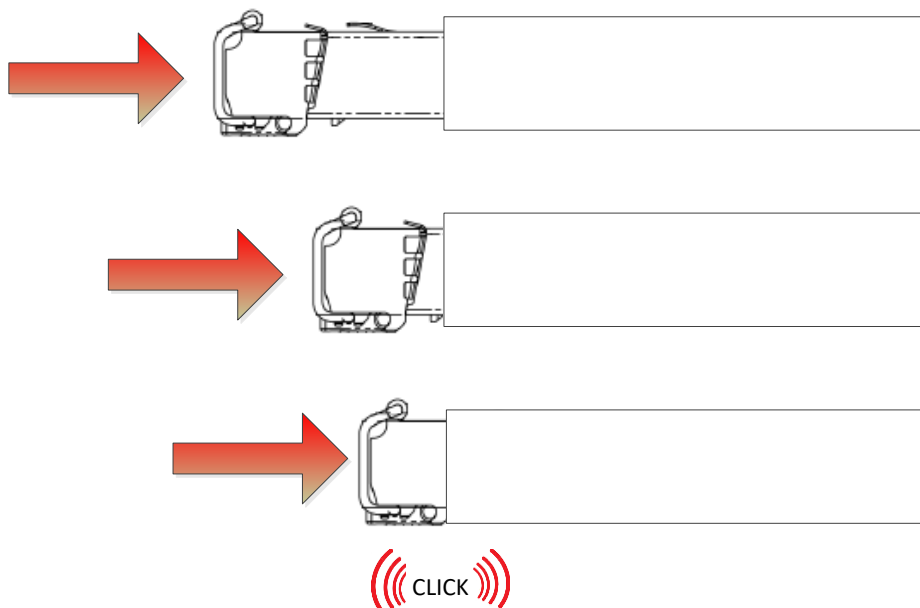


Fig. 2.3: Steps of the Optical Link transceiver plug-in procedure

The position of the adjustable front lever does not affect the plug-in procedure.
In case of any need of support, please contact CAEN as indicated in Sec. 3.9.

3 Configuration and Installation

3.1 System Requirements

The A3818 is provided with drivers for Linux® and Windows® OS, 32 and 64-bit.

THE A3818 WINDOWS DRIVER REL. 2.0.0 (OR HIGHER) REQUIRES THE CAENVMELib 3.0.0 (OR HIGHER)!

THE A3818 WINDOWS DRIVER IS NOT CERTIFIED BY MICROSOFT®! THE DRIVER CAN STILL BE INSTALLED ON WINDOWS PCs BY DISABLING THE SYSTEM SERVICE FOR THE DRIVER SIGNATURE CHECK (ES. SECURE BOOT IN UEFI FIRMWARE INTERFACE OF RECENT COMPUTERS: [FAQ](#)).

CAEN A3818 has been tested on the following list of computer solutions available on the market:

- **Entry-level Solution (Windows 10 Pro – Linux)**
 1. Shuttle XH110G
- **Middle-level Solutions (Windows 10 Pro – Linux)**
 1. ASUS ESC500 G4 Workstation
 2. FUJITSU Workstation CELSIUS W570power+
- **High-level Solutions (Linux)**
 1. GOMA SERVER S_GAP-151R_Broadwell-EP-1
 2. HP DL380 gen10 Server
 3. HP ProLiant DL120 G7 Server

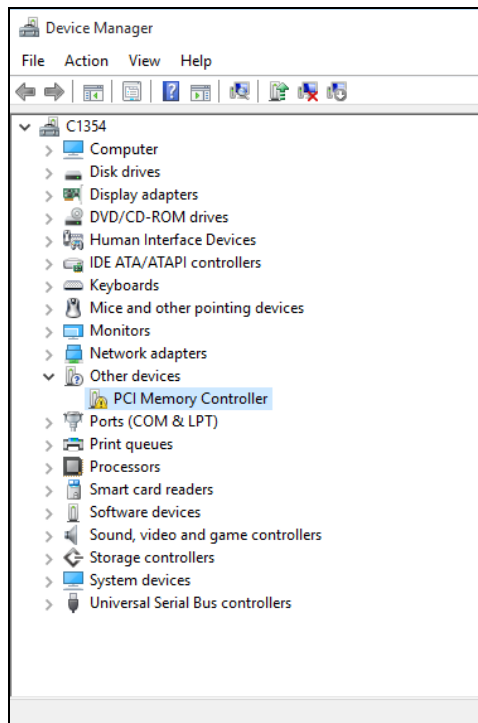
Contact CAEN (Sec. 3.9) for any further information.

THE A3818 IS PCI EXPRESS V2.0 FULLY COMPLIANT CARD. CAEN CANNOT GUARANTEE COMPATIBILITY WITH PCI EXPRESS V3.0 (OR HIGHER) OUT OF THE TESTED SOLUTIONS EVEN IF BACKWARD COMPATIBILITY IS DECLARED BY THE COMPUTER MANUFACTURER.

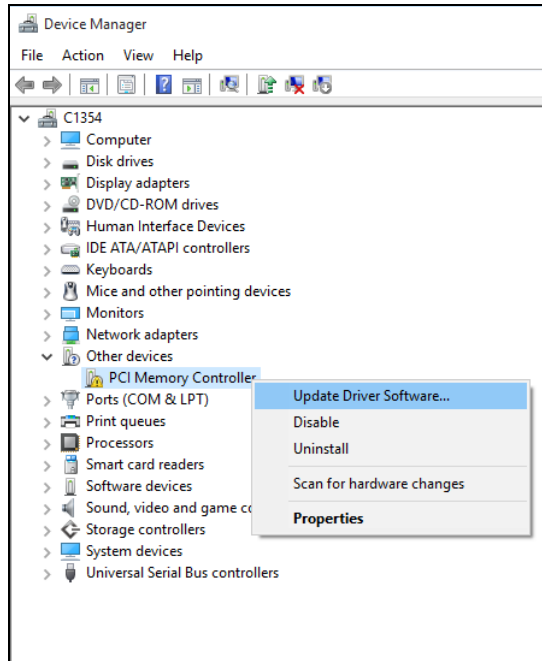
3.2 Installation

The following steps include the A3818 driver installation based on Windows 10 OS. In case of different Windows operating systems, the displayed dialogue boxes, indications or operations may slightly be different.

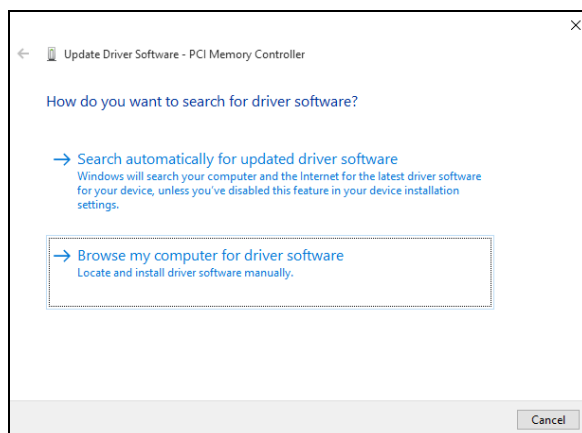
- Plug the A3818 into a free x8/x16 PCI Express slot (see **Table 2.1**)
- Connect the optical fibres as described in Sec. **3.5.1**
- Turn on the system
- Go to the A3818 product page on CAEN website (www.caen.it)
- Click on *Downloads*
- Select the *Software* tab
- Download the driver package for your OS
- Go to the Windows Device Manager and right click on the “PCI Memory Controller” item



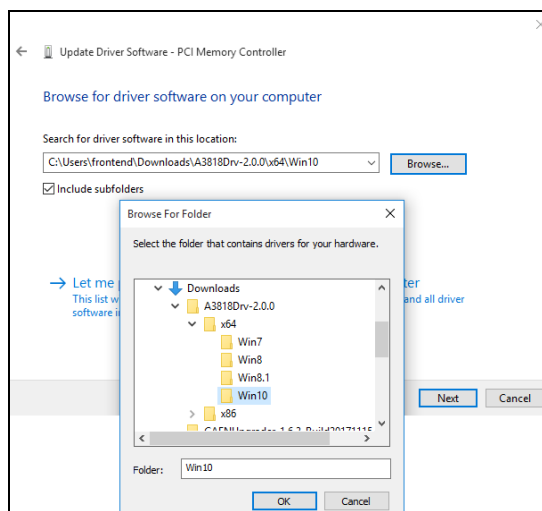
- Left click on “Update Driver Software”



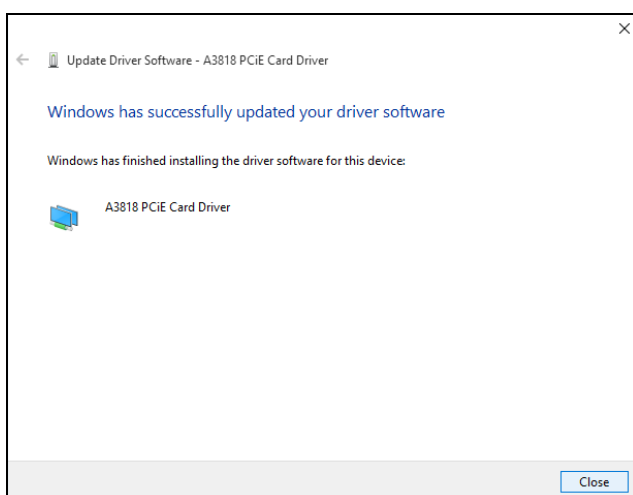
- Select “Browse my computer for driver software”



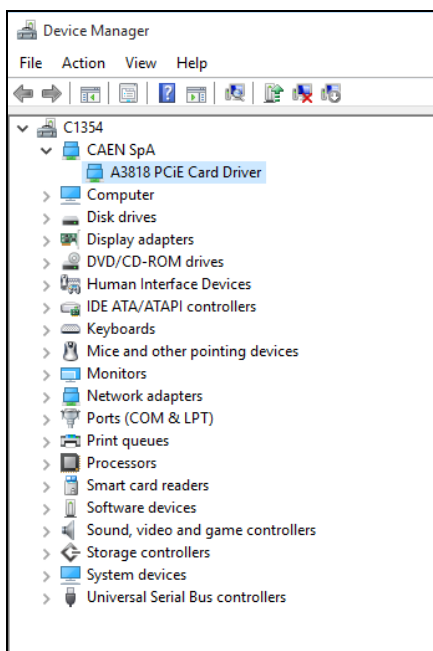
- Point to the driver subfolder you unpacked on your PC



- Wait until the installation process is completed



- Find the hardware properly detected in Windows Device Manager



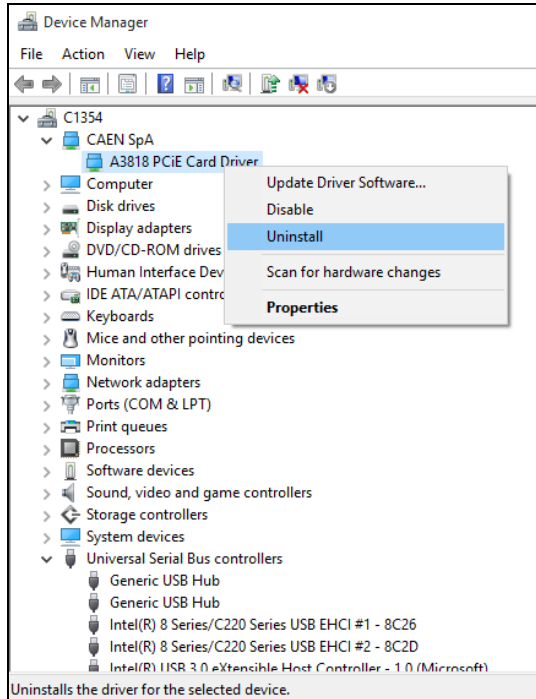
- Install the latest version of CAENVMElib (3.0.0 or higher) free downloadable on CAEN web site at the library page (**login required**).
- Start working with the A3818 PCIe controller.

In case of any need of support, please contact CAEN as indicated in Sec. 3.9.

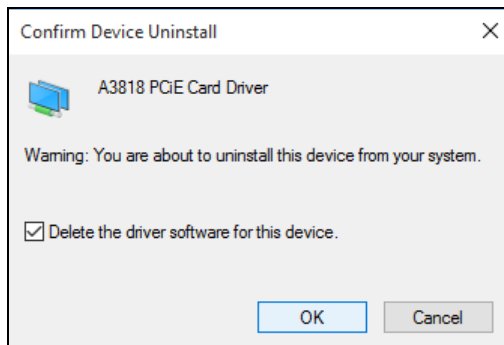
3.3 Uninstallation

To uninstall the A3818 from your PC:

- Go to the Windows Device Manager and right click on “A3818 PCIe Card Driver” item
- Left click on “Uninstall”



- Select “Delete the driver software for this device” and press “OK”



- Shut down your PC
- Unplug the optical fibre from your A3818
- Extract the A3818 from the PCIe slot with caution!

3.4 Components Location

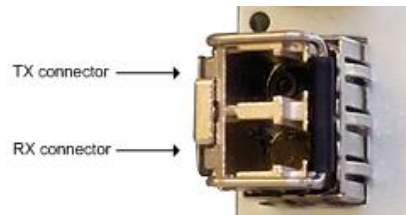


Fig. 3.1: Led and connector location

The A3818 has the following external components:

- TX/RX:** LC type connector (one per link); to be used with Multimode 62.5/125µm cable with LC connectors on both sides
- Leds:** green (one per link); data transfer, active ON

3.5 CONET2 Layout

Up to eight CONET slave nodes can be connected in Daisy chain on each link of the A3818 card optical controller. Therefore, up to thirty-two slave boards can be controlled by the four links of a single A3818C card (see **Table 1.1**). For this purpose, various types of cables are available:

Table 3.1: CONET2 cables specifications

Code	Product	Description
WAI2730XAAAA	AI2730	Optical Fibre 30 m. simplex
WAI2720XAAAA	AI2720	Optical Fibre 20 m. simplex
WAI2705XAAAA	AI2705	Optical Fibre 5 m. simplex
WAI2703XAAAA	AI2703	Optical Fibre 30cm. simplex
WAY2730XAAAA	AY2730	Optical Fibre 30 m. duplex
WAY2720XAAAA	AY2720	Optical Fibre 20 m. duplex
WAY2705XAAAA	AY2705	Optical Fibre 5 m. duplex

3.5.1 Network Connection

- Connect the TX connector of the A3818 to the RX connector of the first Module of the CONET2 network, via the optical fiber cable, then connect the TX connector of the first Module of the network to the RX connector of the second Module (if existing) and so on, until the last module in the chain, whose TX connector must be connected to the A3818 RX connector; if only one Module is present, then its TX connector must be connected to the A3818 RX connector of the A3818. Link index starts from 0 (1st link in the 1st slot used, and so on, see picture below)

Important note: if also A2818s are installed, these ones have lower index number assigned

- Now the network is ready for operation.

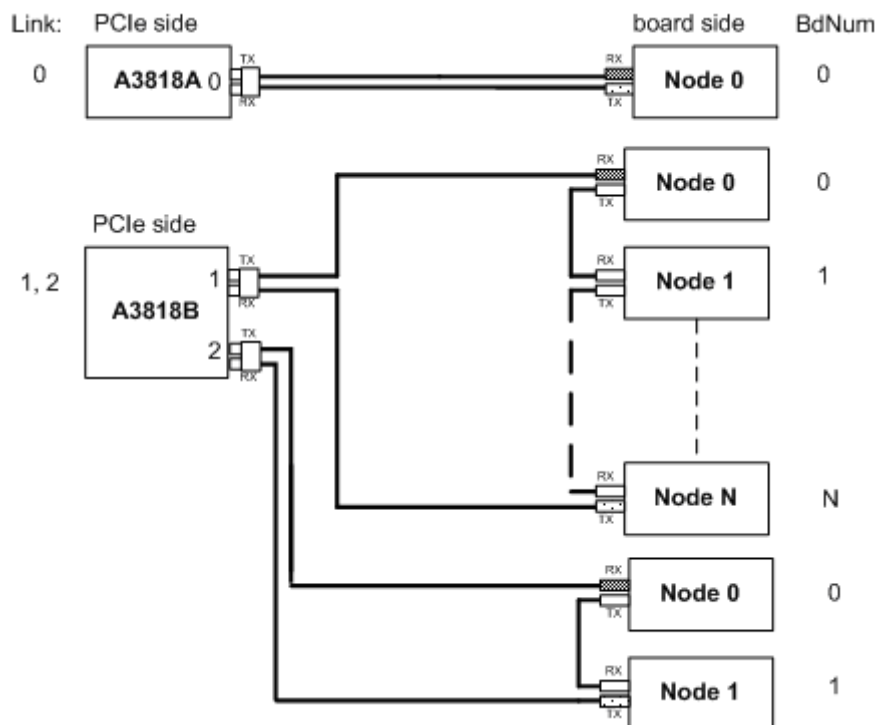


Fig. 3.2: Network scheme

3.6 Firmware Upgrade

It is possible to upgrade the A3818 firmware by writing the Flash. The firmware file is a binary file (.bin) whose name follows this general scheme:

a3818_revX.Y.BIN

where X.Y is the major/minor revision number of the Flash.

Firmware upgrades are free downloadable from CAEN website (www.caen.it) in the *Downloads -> Firmware* area of the A3818 page (**login required**).

CAEN provides the CAENUpgrader software tool to upgrade the firmware. Installation packages and documentation are available for free download from CAEN website (www.caen.it) in the *Downloads -> Software* of the CAENUpgrader page (**login required**).

IMPORTANT NOTE: the A3818 Windows driver rel. 2.0.0 (or higher) requires CAENUpgrader rel. 1.6.3 Build 20171215 (or higher)!

IMPORTANT NOTE: the A3818 can store four firmware image files on the four pages of a BPI Flash (numbered from 0 to 3); the “Config Options” tab of the CAENUpgrader tool allows to select the BPI Flash page where the new image is going to be saved.

The picture below shows the CAENUpgrader settings for the A3818 firmware upgrade (Flash page “0” selected by default).

- Select the Bridge Upgrade tab in the CAENUpgrader GUI;
- select the Upgrade Firmware option in the “Available Actions” menu;
- select A3818 as option in the “Bridge Model” menu;
- browse for the .bin firmware file to load, that you stored on your disk drive (use “all files” option);
- select PCI MASTER as option in the “Connection Type” menu;
- select the “LINK number” of the A3818 (“0” for a single A3818 mounted in the PC); the LINK number parameter is described in the CAENDigitizer User & Reference Manual free downloadable at: <https://www.caen.it/support-services/>;
- select the number of the “Flash page” to store the firmware in;
- click the “Upgrade” button to perform the upgrade.

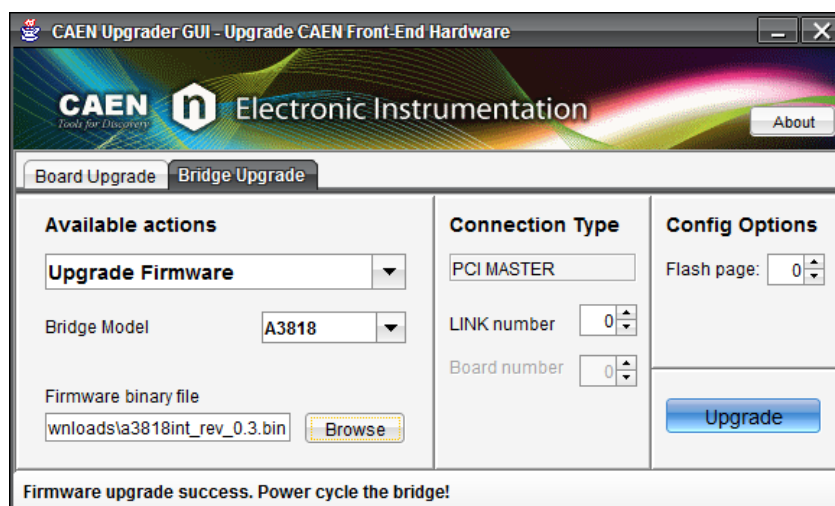


Fig. 3.3: CAENUpgrader tool

- Shut down the PC and then power it on to make the firmware change effective after the message given by the GUI (do not perform a system reset)

Switches S1 and S2 on the A3818 printed board allow to select the image to run:

S2 = A, S1 = A -> firmware on page 0

S2 = A, S1 = B -> firmware on page 1

S2 = B, S1 = A -> firmware on page 2

S2 = B, S1 = B -> firmware on page 3

S1 and S2 setting is meaningless during the firmware upgrade procedure described above.

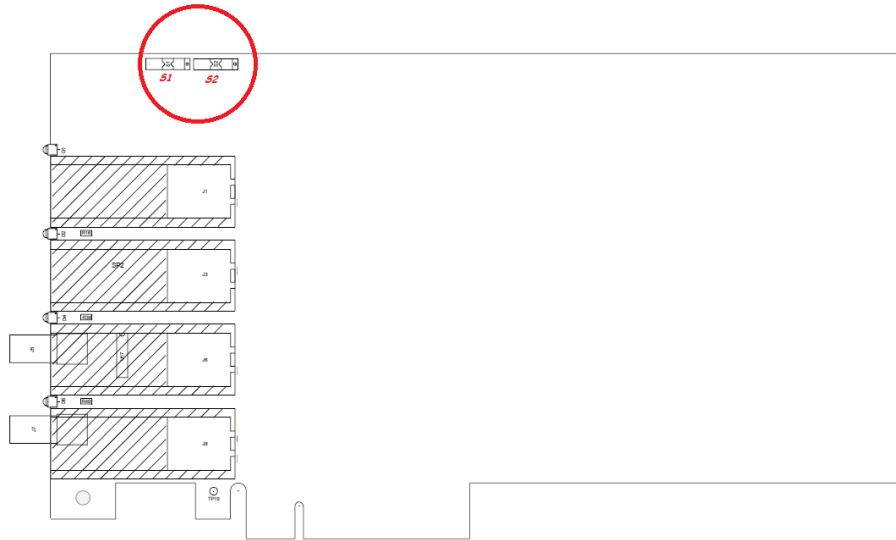


Fig. 3.4: S1, S2 switches location

By using the GET Firmware Release function in CAENUpgrader, it is also possible to read the version of the current firmware loaded on the Flash page selected by the switches above.

3.7 CAEN Modules Control

- VMEbus control through V2718 Bridge: refer to CAEN V2718 Bridge User's manual
- CAEN Digitizers control (all formats: VME, NIM and Desktop): refer to the CAENComm and CAENDigitizer libraries User's manual

3.8 CONET1-to-CONET2 Upgrade

CONET2 is not compatible with CONET1 network, therefore, in order to upgrade CONET1 compatible modules to CONET2 it is necessary to update the modules firmware by using the CAENUpgrader tool (see Sec. 3.6).

3.9 CAEN Technical Support

CAEN makes available the technical support of its specialists for requests concerning the software and hardware. Use the support form available at the following link:

<https://www.caen.it/support-services/support-form/>



**CAEN S.p.A.**

Via Vetràia 11
55049 - Viareggio
Italy
Phone +39 0584 388 398
Fax +39 0584 388 959
info@caen.it
www.caen.it

**CAEN GmbH**

Brunnenweg 9
64331 Weiterstadt
Germany
Tel. +49 (0)212 254 4077
Mobile +49 (0)151 16 548 484
info@caen-de.com
www.caen-de.com

CAEN Technologies, Inc.

1 Edgewater Street - Suite 101
Staten Island, NY 10305
USA
Phone: +1 (718) 981-0401
Fax: +1 (718) 556-9185
info@caentechnologies.com
www.caentechnologies.com

CAENspa INDIA Private Limited

B205, BLDG42, B Wing,
Azad Nagar Sangam CHS,
Mhada Layout, Azad Nagar, Andheri (W)
Mumbai, Mumbai City,
Maharashtra, India, 400053
info@caen-india.in
www.caen-india.in



Copyright © CAEN SpA. All rights reserved. Information in this publication supersedes all earlier versions. Specifications subject to change without notice.